

Supplement of Ocean Sci., 13, 521–530, 2017
<https://doi.org/10.5194/os-13-521-2017-supplement>
© Author(s) 2017. This work is distributed under
the Creative Commons Attribution 3.0 License.



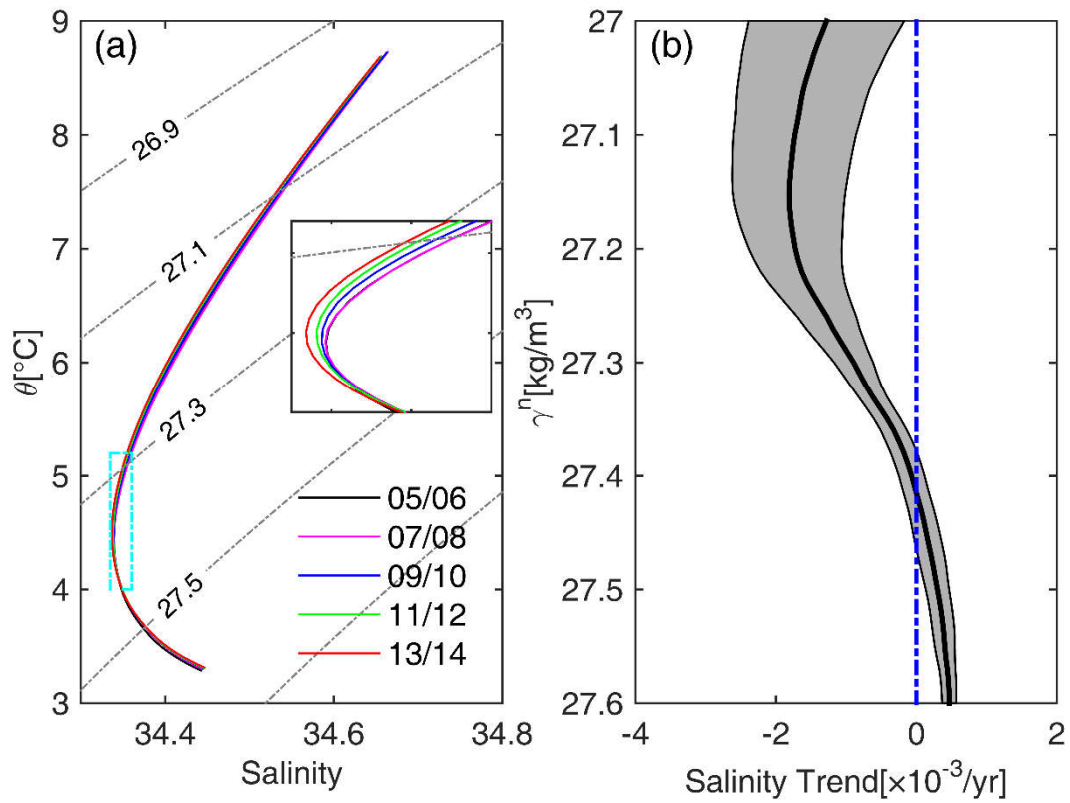
Supplement of

Freshening of Antarctic Intermediate Water in the South Atlantic Ocean in 2005–2014

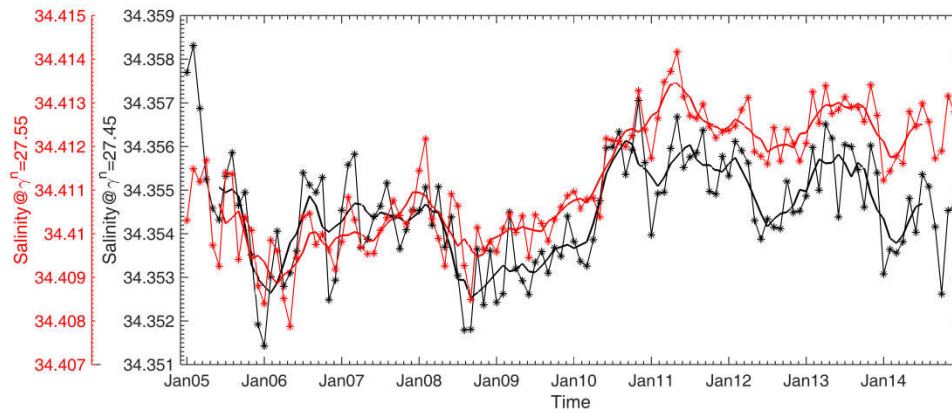
Wenjun Yao et al.

Correspondence to: Wenjun Yao (wjimyao@gmail.com)

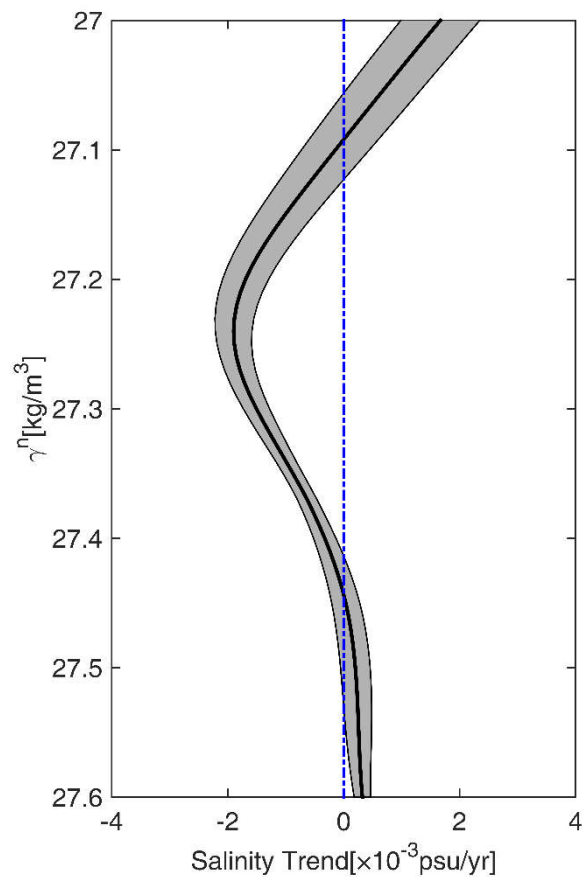
The copyright of individual parts of the supplement might differ from the CC BY 3.0 License.



Supplementary 1 (a) Biennial mean θ - S diagram averaged over Region A for JAMSTEC data with γ^n surfaces superimposed (grey solid-dotted lines). The inserted figure is the magnification of the area delineated by cyan solid-dotted box. The corresponding time for each θ - S curve is listed in the bottom-right corner (i.e. 05/06 for 2005-2006). (b) Salinity trend along γ^n surfaces for period Jan 2005 - Dec 2014 is displayed by the thick black line, and the 95% confidence intervals (F -test) are represented by the light grey shadings, calculated from the JAMSTEC data.



Supplementary 2 Time series of monthly salinity on the $27.45\sigma^t$ (black) and $27.55\sigma^t$ (red) surfaces, calculated from the IPRC data and averaged over the Region A shown in Fig. 2. Thin star lines and thick lines represent monthly and 13-month running mean values, respectively.



Supplementary 3 Salinity trend along γ^{θ} surfaces for period Jan 2005 - Dec 2014 is displayed by the thick black line, and the 95% confidence intervals (F -test) are represented by the light grey shadings, calculated from the SODA data.